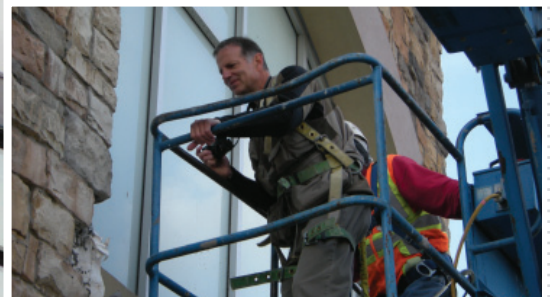


Condition Assessment



We implement a systematic approach to quickly diagnose critical problems.

The evaluation of your building's condition starts with review of relevant historical maintenance and repair data and interviewing property management personnel. This review shapes the on-site investigation which can range from low-impact (non-invasive) visual inspections to large multi-phase invasive testing protocols designed to identify leak sources. By implementing a systematic approach we can quickly diagnose critical problems that pose current and future risk to your property.

Our forensic experts have inspected hundreds of residential and commercial properties and have the experience and tools required to investigate single-story and high-rise projects. While we specialize in the evaluation of the building enclosure, we have developed a network of experts ready to address any building system.

After the inspection is complete, the next step is preparing a scope of repair. Depending on the magnitude, we can also provide pre-construction, architectural, and construction management services.

Regardless of your facility's condition, we can propose a solution that works for you.